

KENSINGTON & CHELSEA
FEBRUARY 2018

edition

YOUR NEW
EXCLUSIVE
MAGAZINE

WORK SMART

Key pieces to refresh your
office wardrobe

NEW DIARY DATES

The best events in
your area and beyond

41-PAGE
EDUCATION SPECIAL

Spring awakening

Fresh ideas for
new-season interiors

property



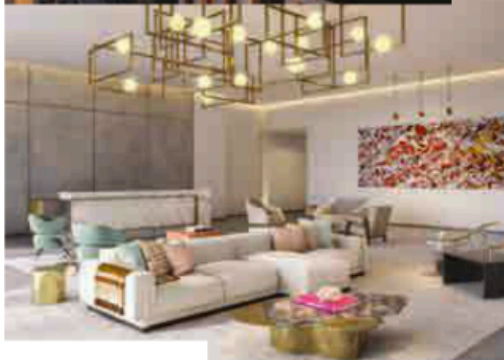
Discover an impressive new central London residential and retail destination, luxury Thames-side living with a historic connection and new family homes near Epping in a village setting

Iconic location

You can't get a much more central London location than The Broadway – a brand-new residential and retail quarter in the heart of Westminster, set for completion in 2021. Located at the former New Scotland Yard headquarters, The Broadway will offer views of some of the capital's most iconic landmarks, including The Houses of Parliament, Big Ben, Buckingham Palace, the London Eye and Green Park. The collaboration between ultra-prime developer Northacre and acclaimed architect Squire and Partners will include six striking towers (named after the world's most revered diamonds), framing a 20,000 sq ft public courtyard featuring an array of shops, cafes and restaurants. The state-of-the-art residential space will be located on the fourth floor, and two landscaped podiums linking the towers will provide a private garden. In addition, residents will benefit from the use of a swimming pool, gym and treatment rooms, as well as a screening room and parking. *From £1.56m. thebroadwaylondon.com*



property



The elegant lobby of The Broadway and the view (above)

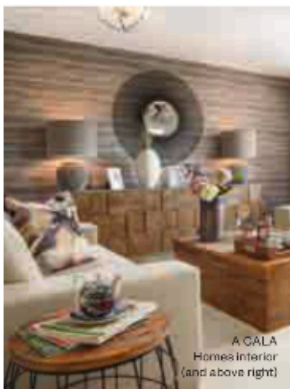
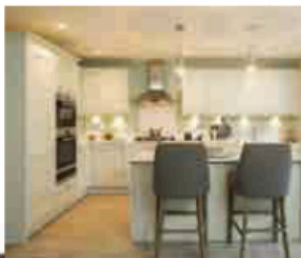


WATERFRONT LUXURY

Snap up your own piece of riverside living at St James' exclusive gated seven-acre development, Fitzroy Gate. Situated on one of the Thames' last remaining natural riverbanks in Old Isleworth, the traditional streetscape includes 39 four to six-bedroom houses. The new Turner Collection of four and five-bedroom properties, which overlook a beautifully restored historic estate, pays homage to the artist, who painted this part of the river in the 1800s. Half of the development is made up of landscaped parkland, while each home also has its own private garden. *From £1,400,000. 020 3432 2981; fitzroygate.co.uk*

prime spaces

All the latest PROPERTY news, moves and new developments in the SOUTH EAST this month



A CALA Homes interior (and above right)

ESSEX

Family friendly

If you like the convenience of being near a town, but with the benefits of a village location, CALA Homes' new development of three and four-bedroom family homes could be for you. The Forest Ridge collection – CALA Homes' fourth development in the county – is situated in the rural village of Coopersale, whilst being just a short drive from the trendy market town of Epping. The development also includes Ventnor Lodge in Quendon, which will offer 12 stylish two to five-bedroom properties. cala.co.uk